

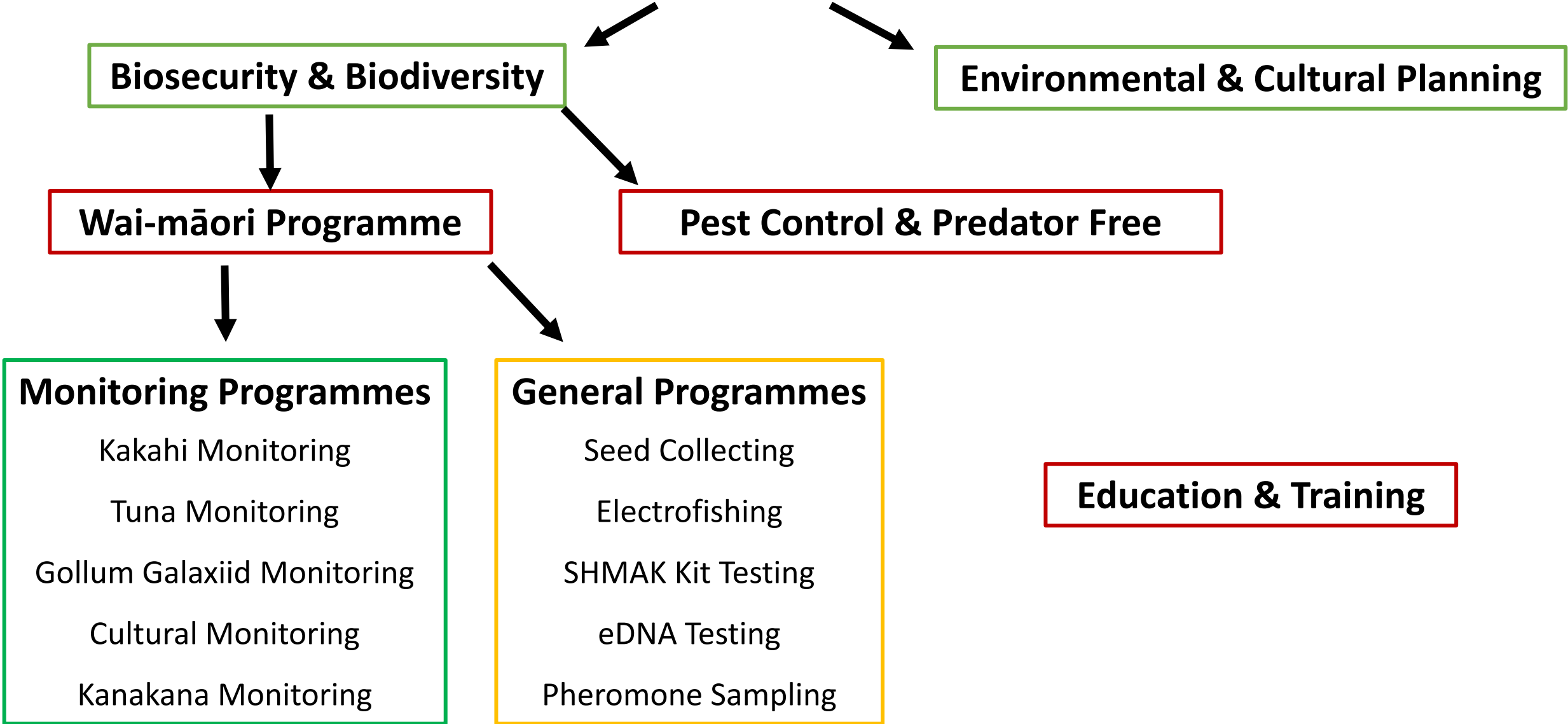
WAI-MĀORI WORK PROGRAMMES

Hokonui Rūnanga Kaupapa Taiao

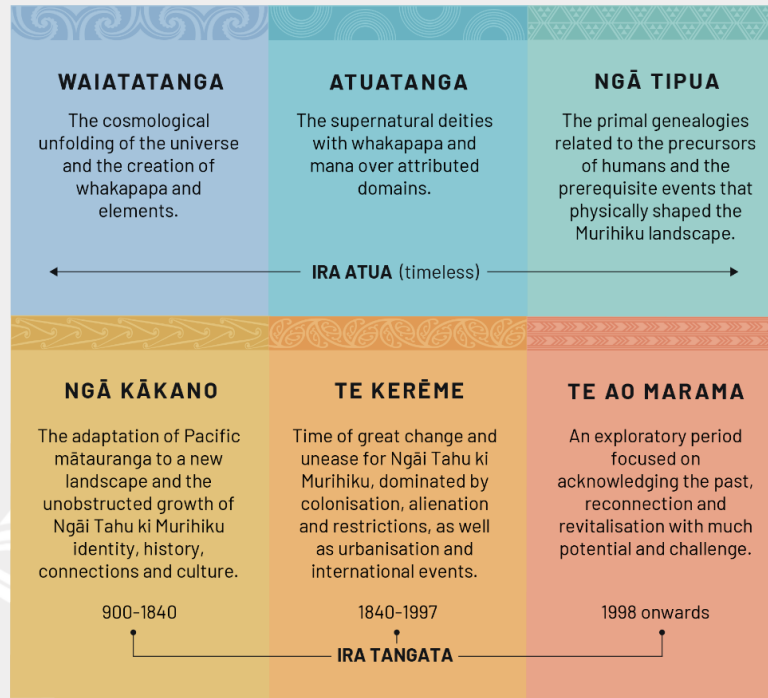


TAIAO
HOKONUI RŪNANGA

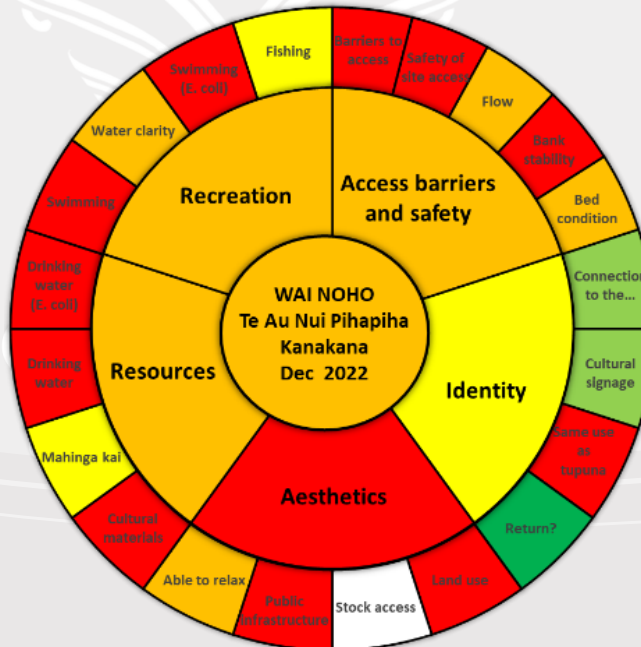
Hokonui Rūnanga Kaupapa Taiao



Cultural Assessments



Āpiti Hono Tātai Hono



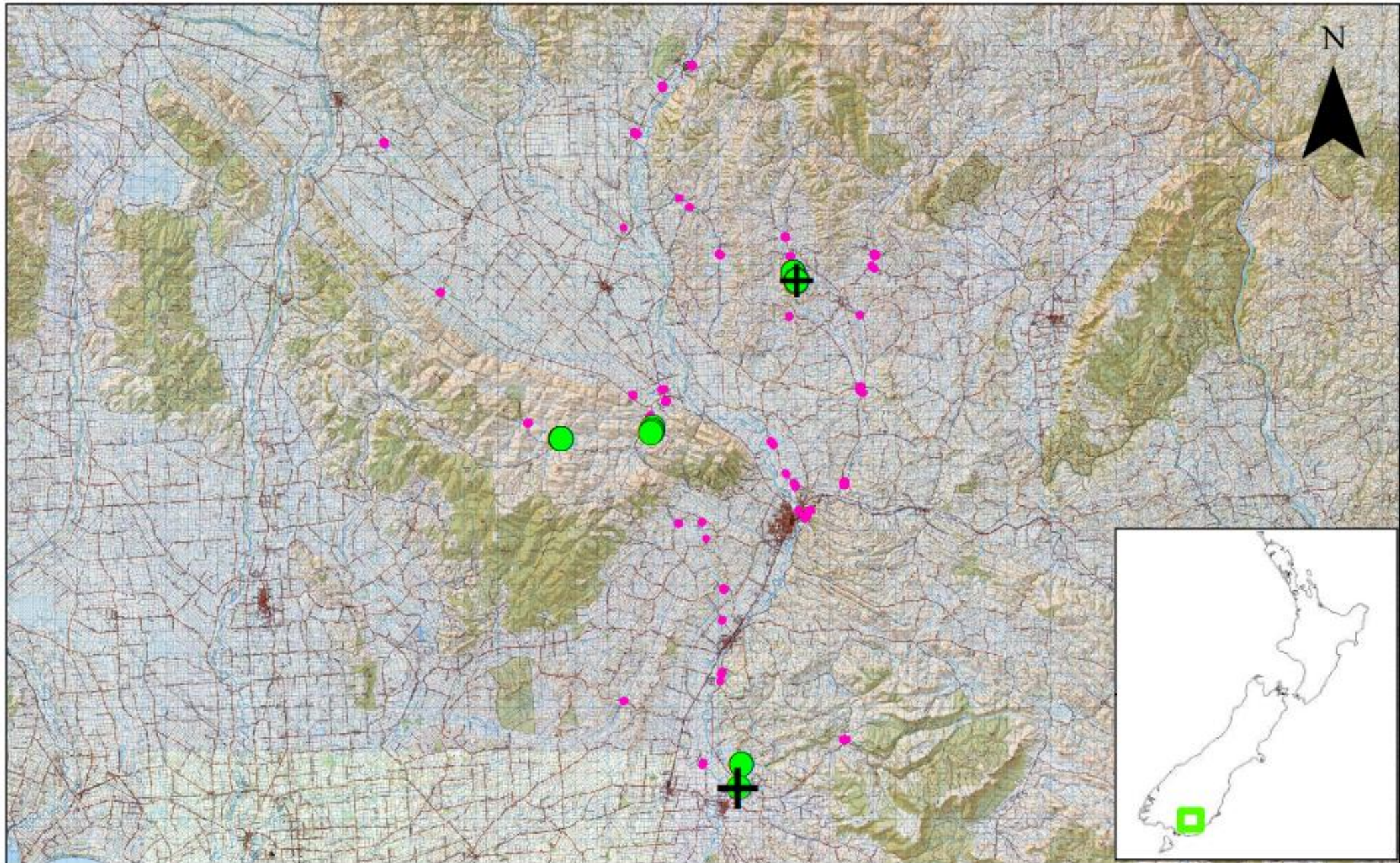
He Puna Whakaata o Mātauranga

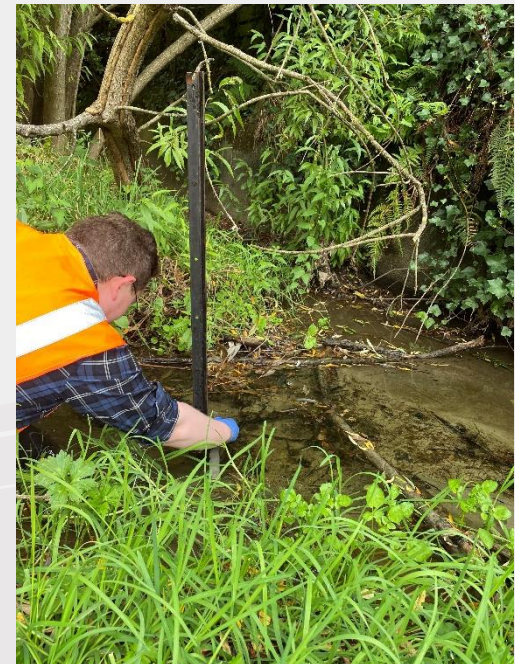


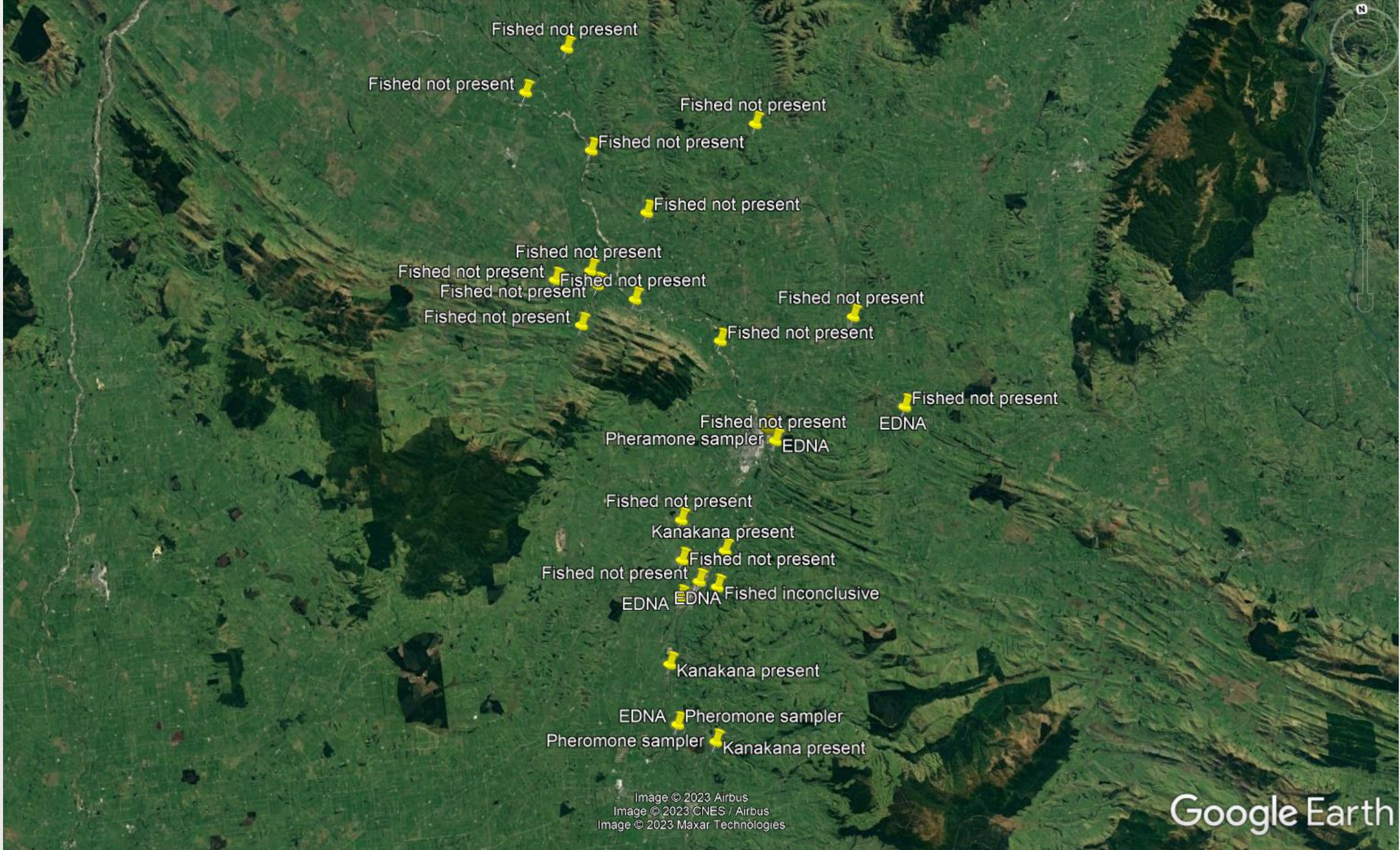
Summer Internship - Kākahi Monitoring



Kākahiki Surveys 2022/2023







Fished not present

Fished not present

Fished not present

Fished not present

Fished not present

Fished not present

Fished not present

Fished not present

Fished not present

Fished not present

Fished not present

Fished not present

Fished not present

Fished not present
Pheromone sampler

EDNA

EDNA

Fished not present

Kanakana present

Fished not present

Fished not present

EDNA

EDNA

Fished inconclusive

Kanakana present

EDNA

Pheromone sampler

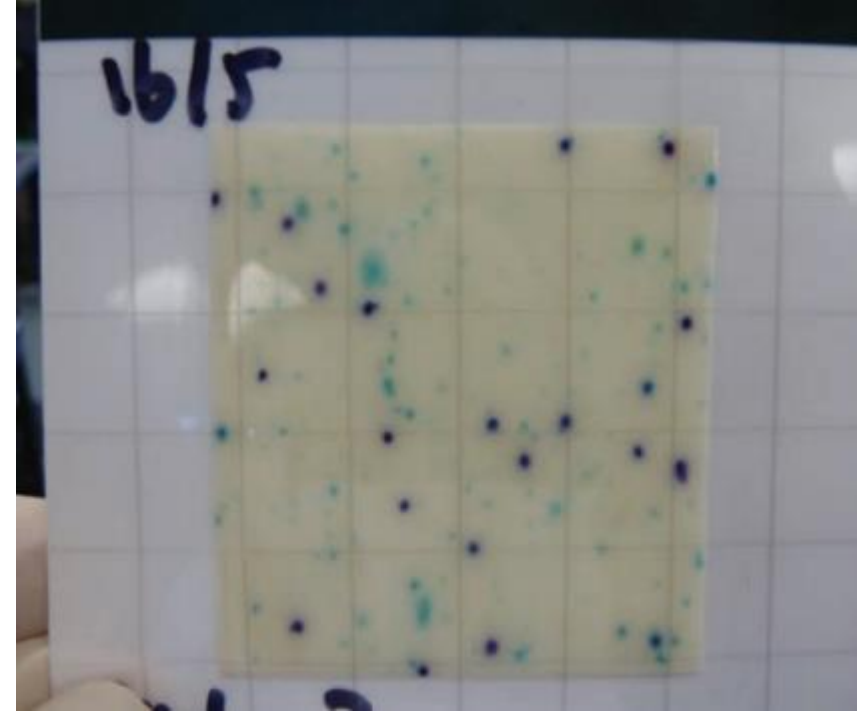
Pheromone sampler

Kanakana present

Image © 2023 Airbus
Image © 2023 CNES / Airbus
Image © 2023 Maxar Technologies

Google Earth

45°48'34.59" S 168°28'38.09" E elev 168 m eye alt 88.03 km



Mataura River Mātaitai





Kaitiaki Plan in partnership with Alliance

- Elver Trap and Transfer
- Downstream Tuna Heke migration
- Kanakana monitoring and work programme
- Fish Passage assessments
- Pou and beautification plans
- Riparian planting of Alliance farms



NUI
NGA

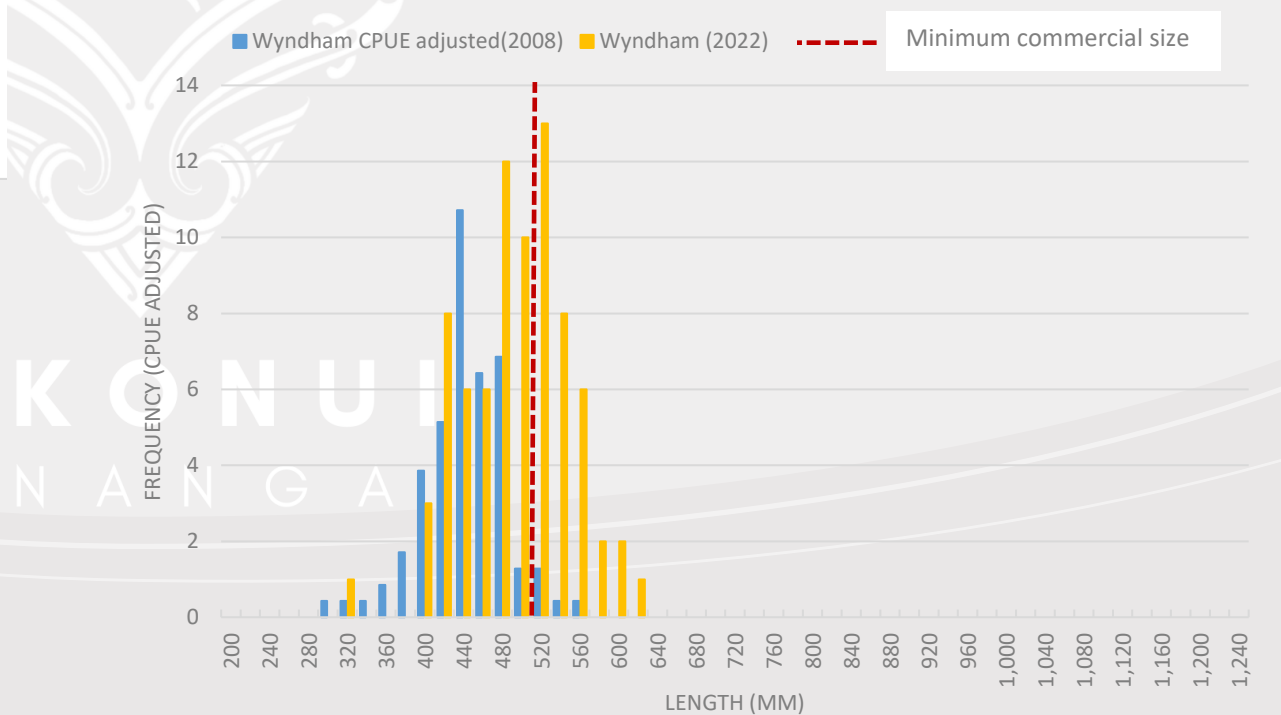
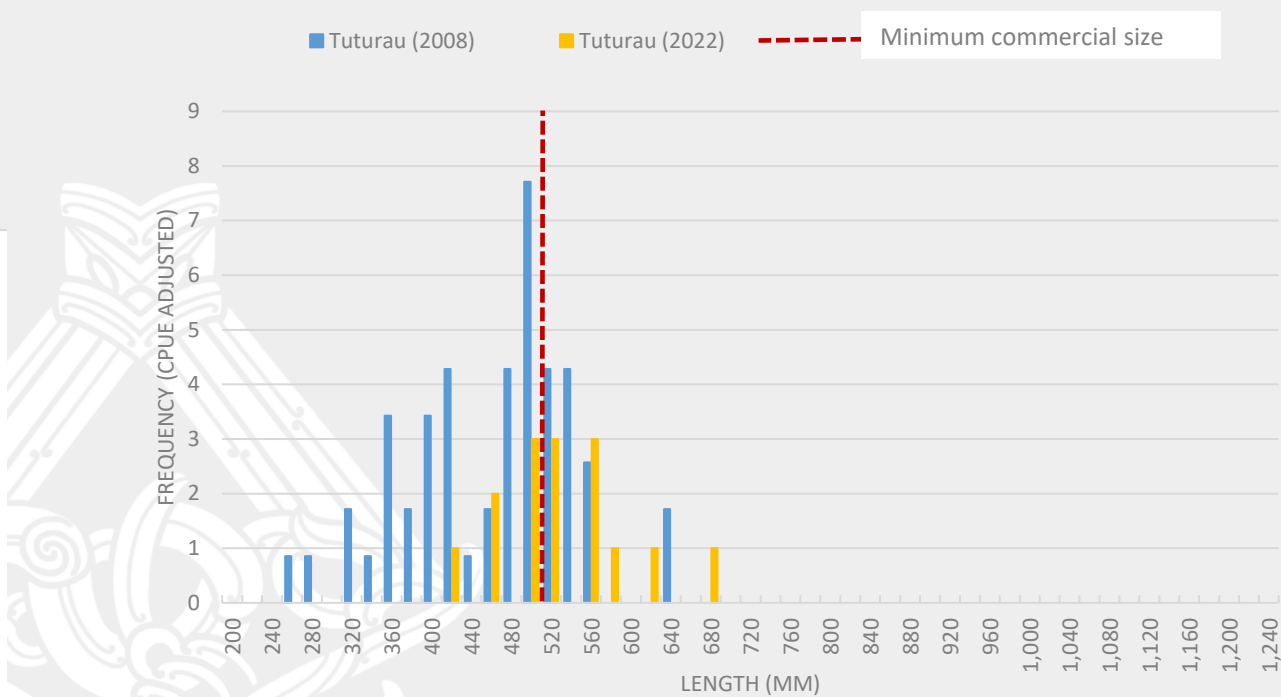
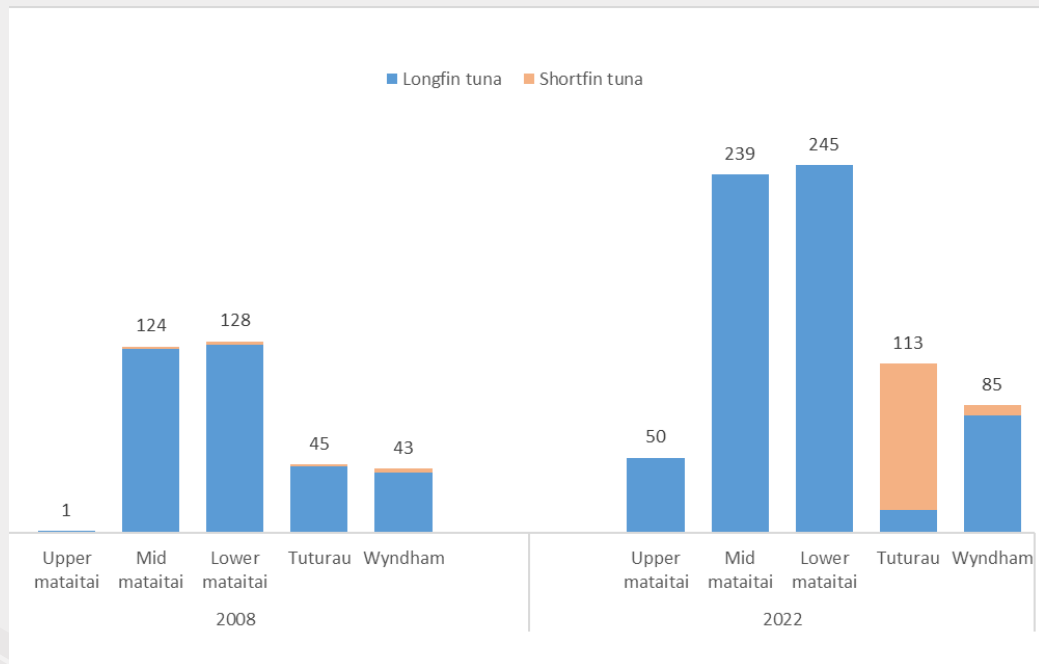




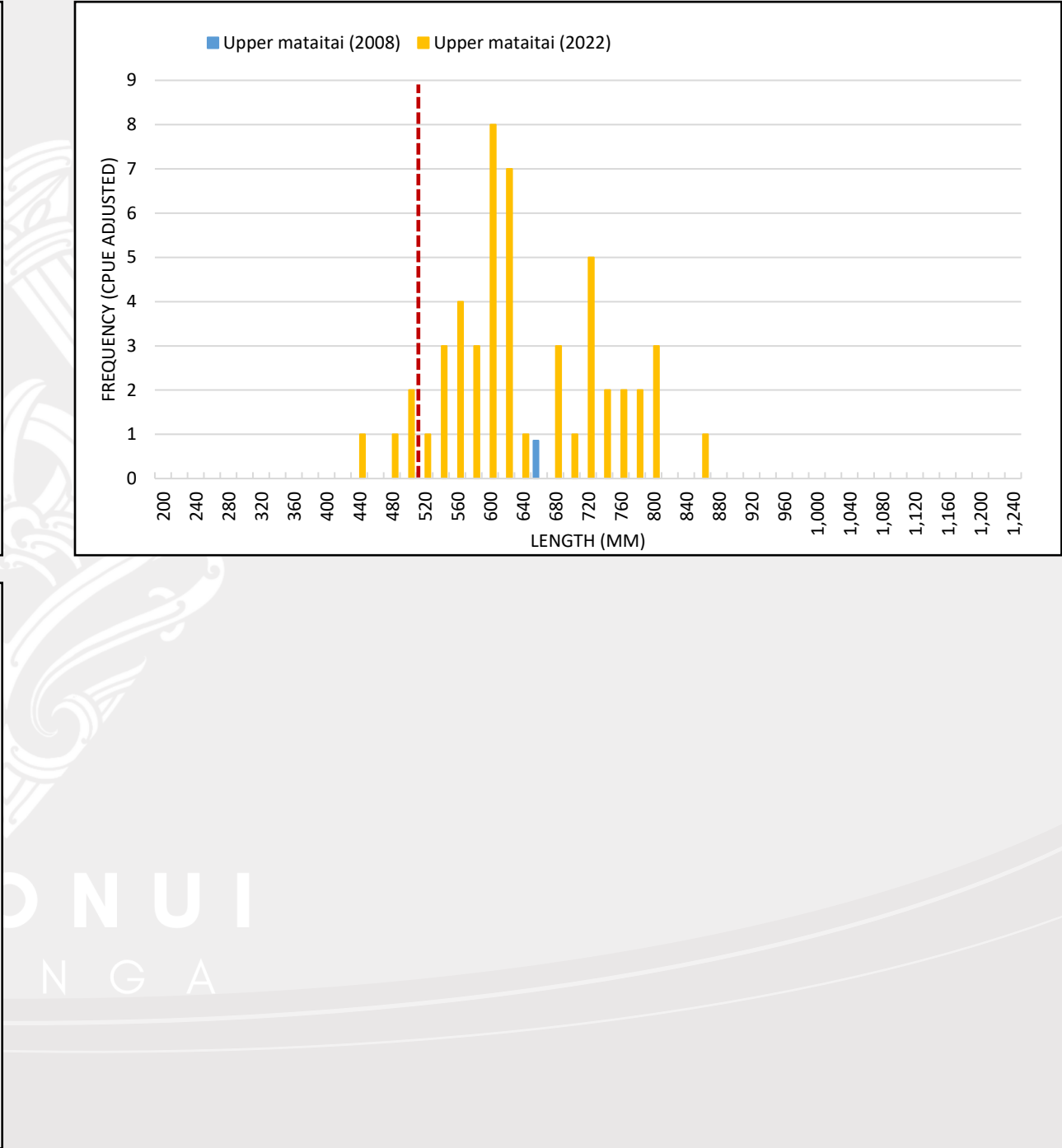
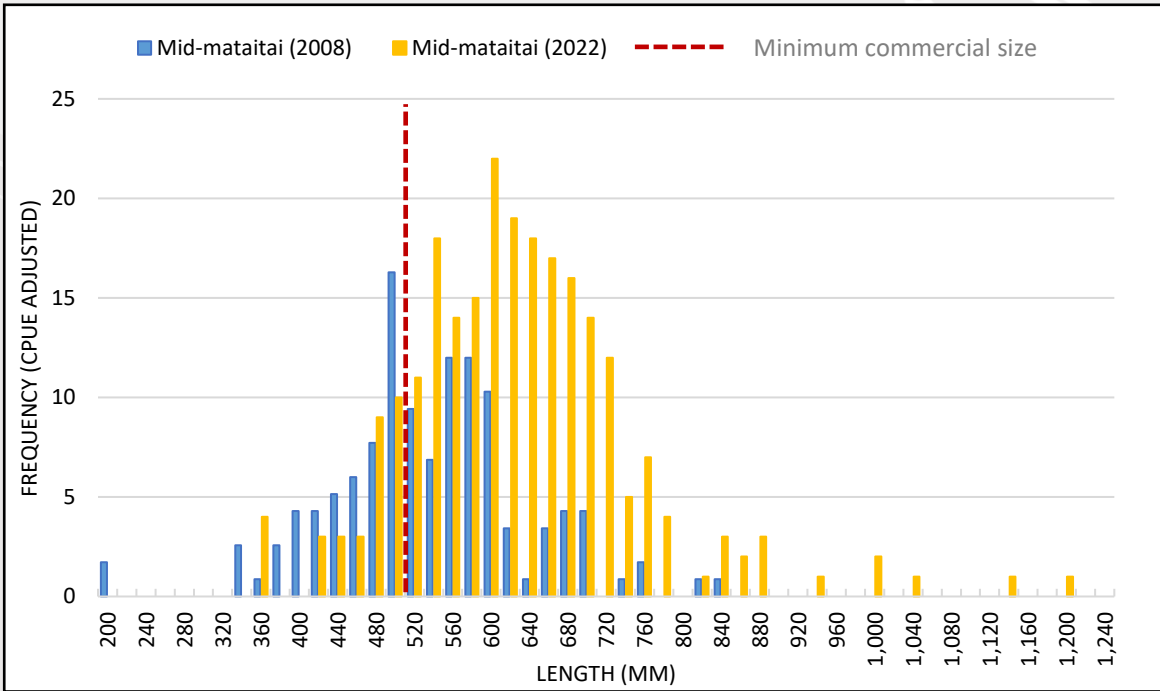
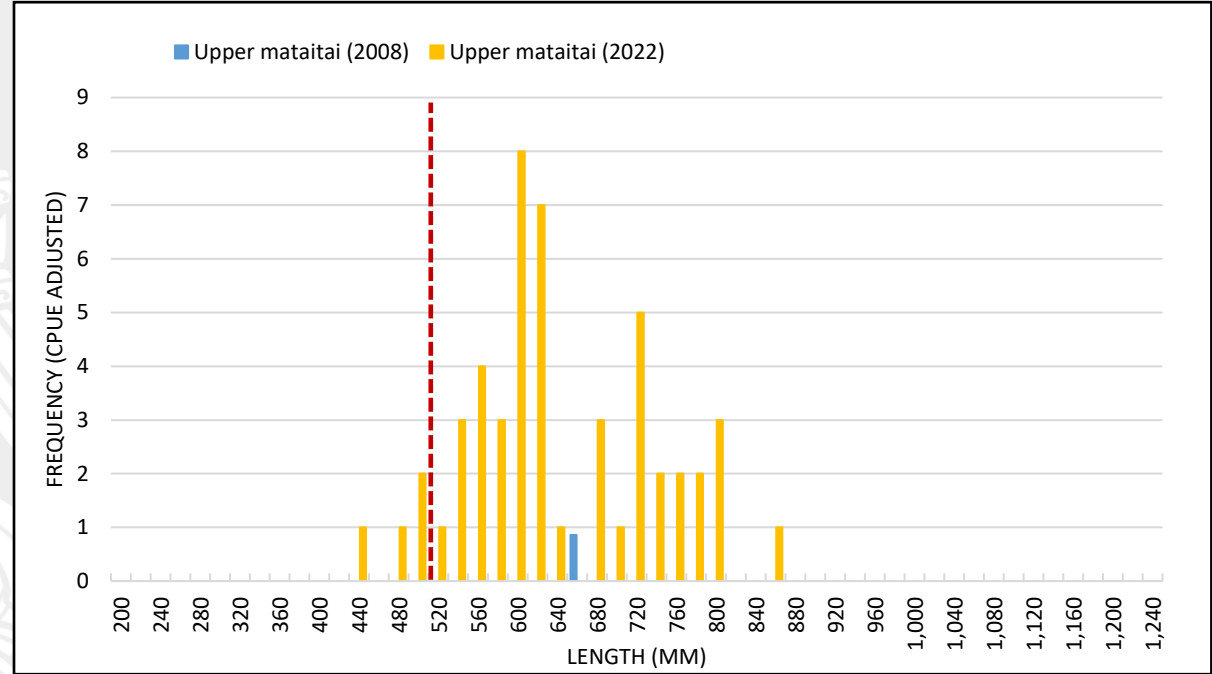
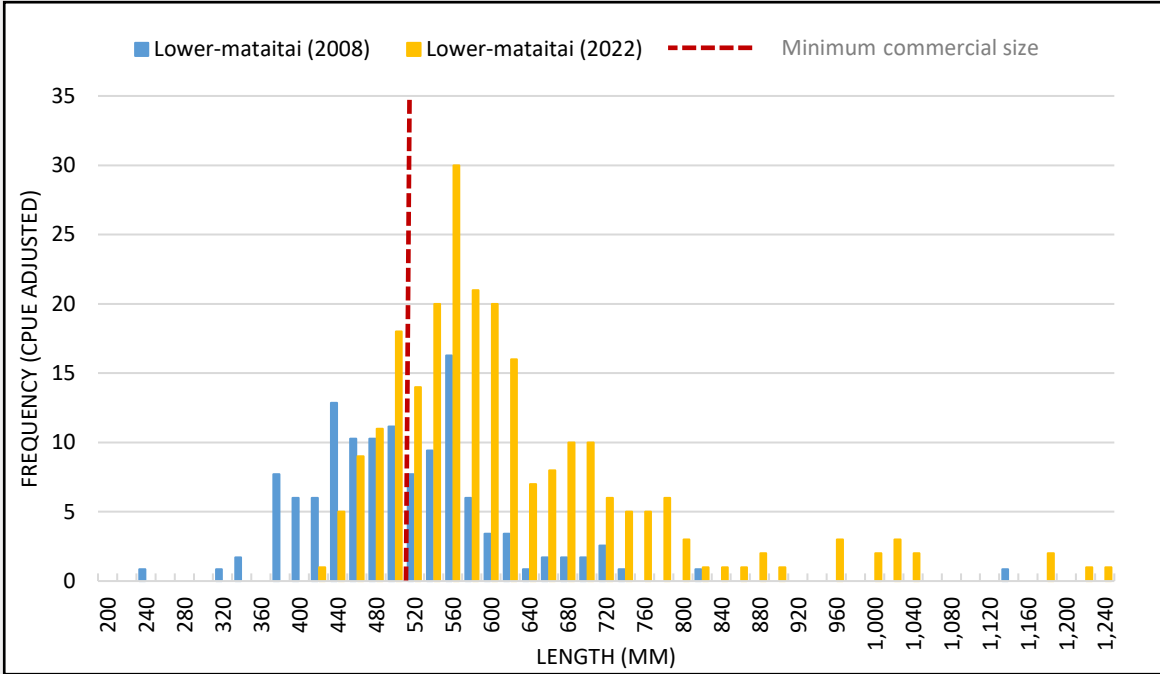


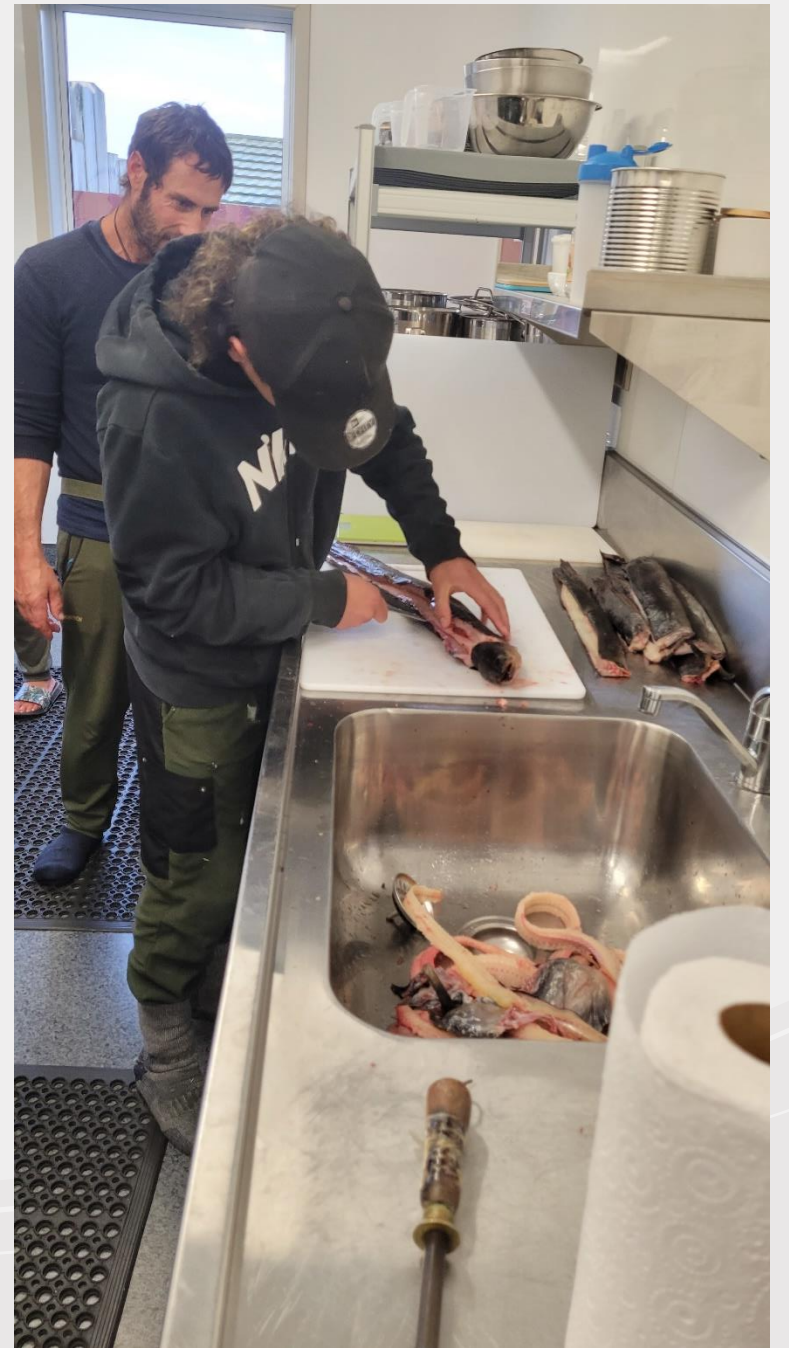
Tuna surveys





Total number of tuna caught in the 2008 and 2022 surveys, and the proportion of longfin and shortfins at each site



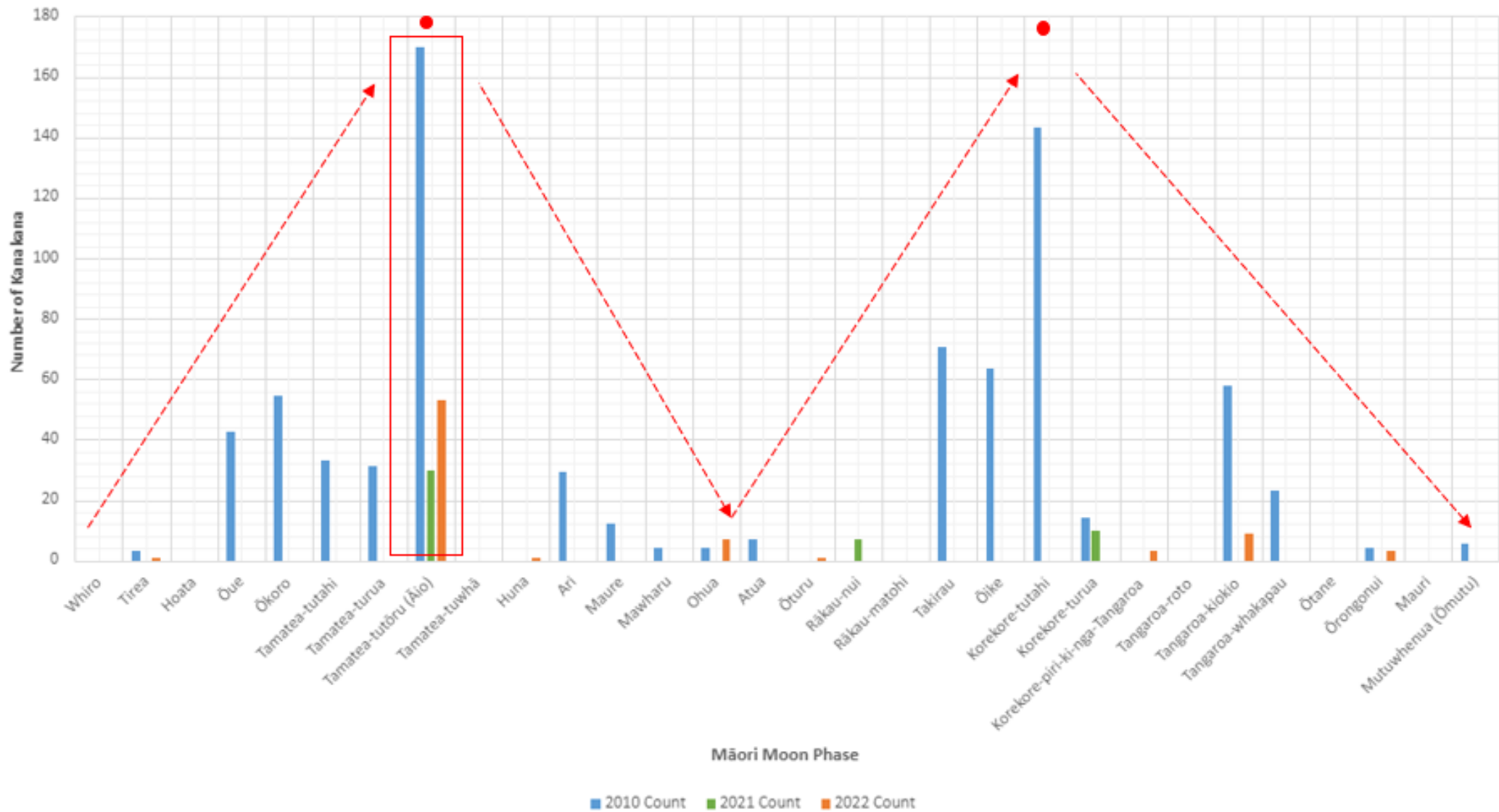


Kanakana monitoring



HOKONUI
RŪNANGA

Number of Kanakana vs Māori Moon Phase [2010-2021-2022]



National
Science
Challenges

NEW ZEALAND'S
BIOLOGICAL
HERITAGE

Ngā Koiora
Tuku Iho



Manaaki
Whenua
Landcare
Research



Kitson
Consulting Ltd



Toitū Te Whenua
Land Information
New Zealand

Waikana Stream & Kanakana Restoration Project



**REIMAGINING
MATAURA**



TAIAO
HOKONUI RŪNANGA

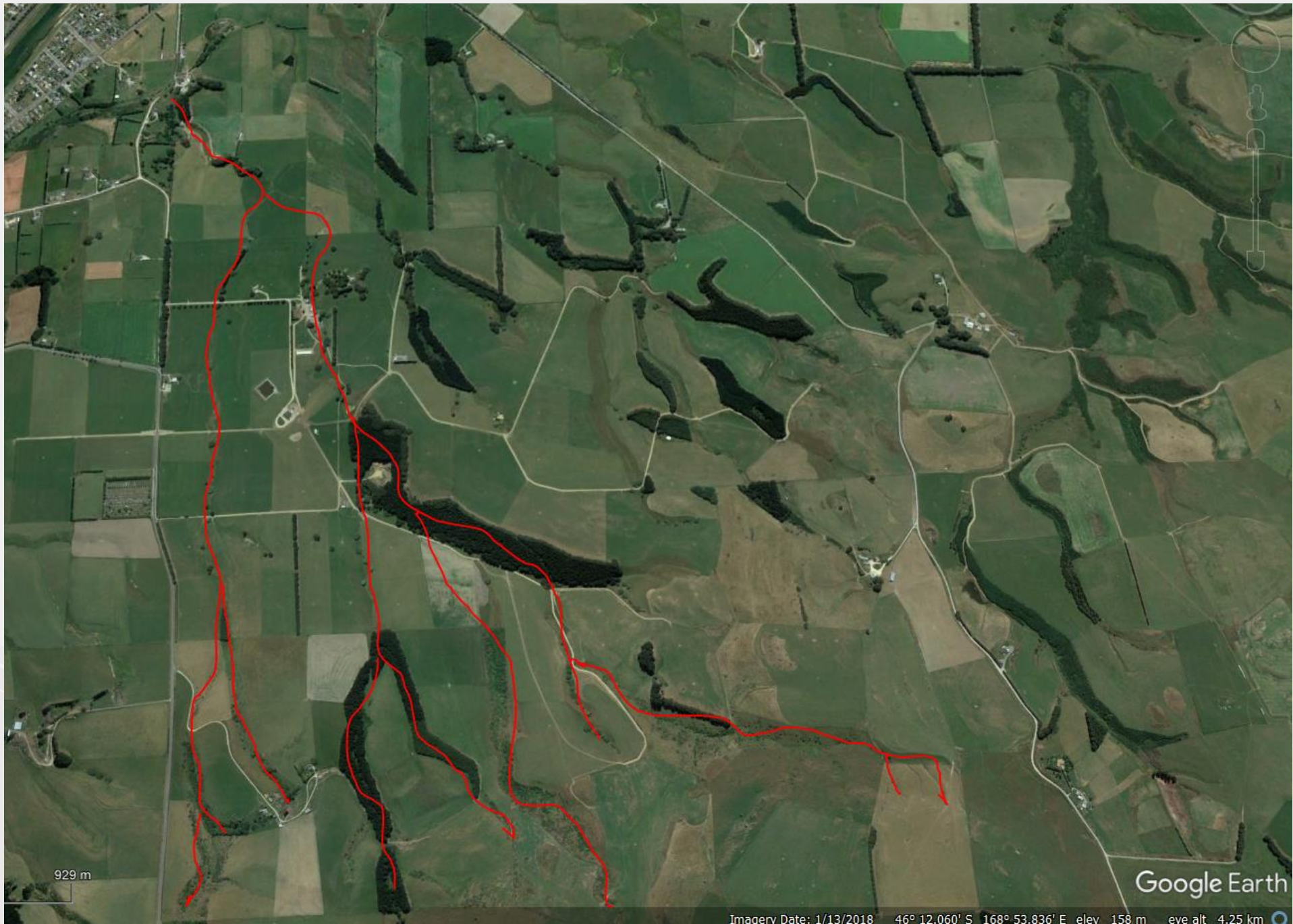




217 m

Mabura River

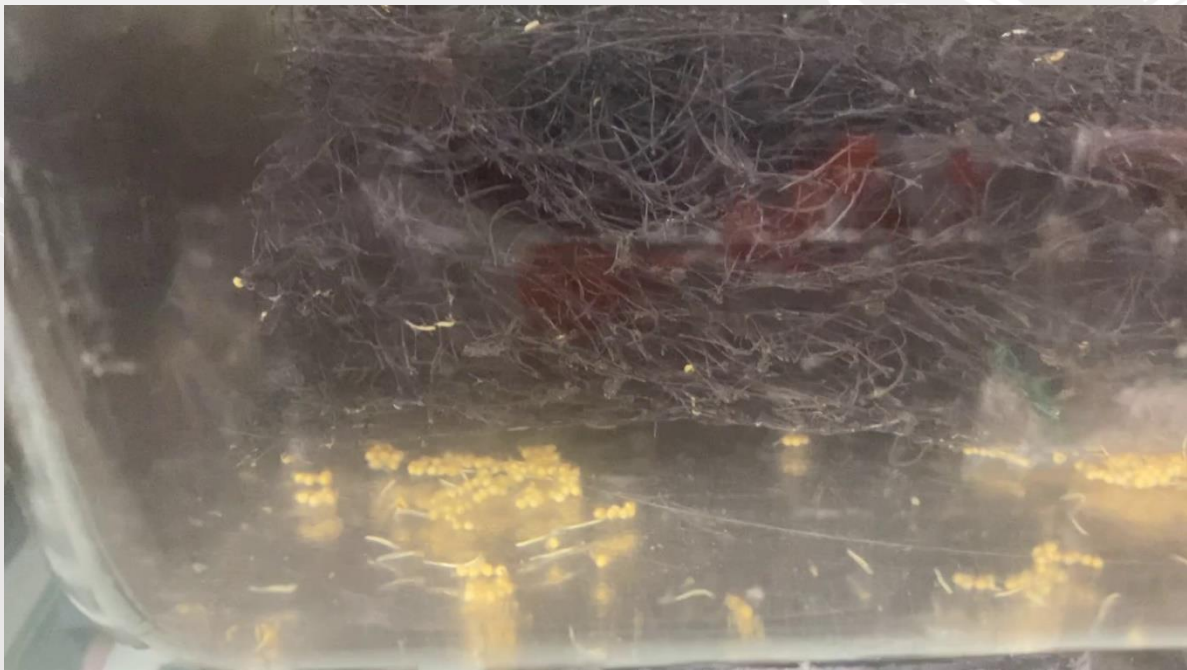




929 m

Google Earth

Imagery Date: 1/13/2018 46° 12.060' S 168° 53.836' E elev. 158 m eye alt. 4.25 km





National
SCIENCE
Challenges

NEW ZEALAND'S
BIOLOGICAL
HERITAGE

Ngā Koiora
Tuku Iho



Want to be involved?

Ecological Stream Restoration

- Habitat enhancement
- Riparian Planting
- Taonga species restoration and monitoring
- Nutrient Management
- Land use Management
- Sediment Management
- Urban and pastoral stream enhancement
- CRI partnerships for Sciences opportunities
- Opportunities for Undergraduate and PostGraduate students

HOKONUI
RŪNANGA



mataura
VALLEY MILK

Part of The a2 Milk Company



ALLIANCE

FARMERS' PRODUCE

SINCE 1948

*Dairy***NZ** 



OHAU-NEW VALE
COAL



Fulton Hogan

DAIKEN
SOUTHLAND LIMITED